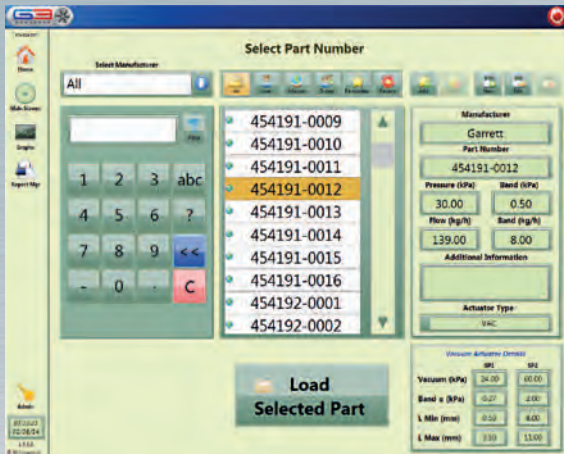


Touch-Screen Control



Control Screen



Database



Contact Details

G3 Concepts Limited

Directors

G. Blagbrough
G. Blanshard
G. Picken

Tel: +44 (0)1695 559957
www.g3concepts.co.uk
e-mail: sales@g3concepts.co.uk

Company Registration Number 09092319
VAT Registration Number GB154089307



G3-min-Flow^{AIR}
**Turbocharger
minimum flow bench**

The **G3-min-Flow^{AIR}** was designed and built in the UK by 3 former Garrett Test Engineers whom have a combined total of 60 years in the Industry. These highly skilled & experienced engineers have designed this machine with the end user in mind. No complicated set up, easily managed database and software, simple adaptors which can be easily made by the end user.

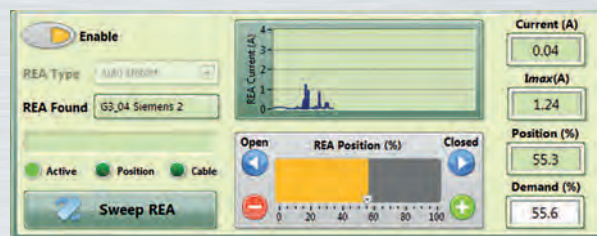
Features and Benefits

- Calibrated to UKAS traceable standards
- Calibration test plates provided to easily verify the accuracy of the machine
- Test the minimum flow of any VGT Turbocharger up to 180kg/h*
- Quick release mounting flange, complete with four adaptors
- REA Controller included, complete with six cables
- Simple, no nonsense software, with touch screen interface
- Built in database, with c.1700 references
- Connects directly to your shop air system (7.0 Bar, Clean, Dry Air Required*)
- Compact size of 72 x 72 x 100cm (LxWxH) (with castors fitted)
- Built in drawers for storage of adaptors and cables
- Full CE Accreditation

Package Contents

- 1 x G3-min-Flow^{AIR} machine
- 1 x Industrial grade touch-screen monitor
- 4 x Adaptor plates
- 6 x R.E.A. Cables
- 1 x Anti-rotation device
- 1 x C-Spanner
- 4 x C-Clamps
- 2 x Calibration Orifice Plates

R.E.A. Controller Built-In



Optional Hella™ Programming



Optional VDO Programming



Simple Operation

- Fit the supplied adapter to the turbocharger and mount onto the air outlet port.
- Locate the anti-rotation device onto the nose nut



- Select the turbo part number from the database using the touch-screen interface.
- Press "LOAD SELECTED PART"
- The correct parameters will be loaded and display a green criteria band on the display.
- Pressing "START" will begin the test sequence.
- The machine generates a stable pressure and displays the actual flow through the VGT
- The test result is displayed as PASS or FAIL.
- If the turbo does not pass, adjust the minimum-flow as required, either by adjusting the set-screw or re-positioning the Rotary Electronic Actuator (R.E.A)
- Once passed, you can print a test certificate for your record (*Printer optional).
- You can now be assured that it will perform correctly on your customers vehicle.